



# **Armaturen GmbH**

**Armaturen, Rohre, Sonderteile aus Edelstahl**  
fittings, pipes, special parts of stainless steel

**Montagezubehör**  
installation accessories



**Armaturen GmbH**

fon + 49 (0) 44 65 8 07 0  
fax + 49 (0) 44 65 8 07 40



**Armaturen GmbH**

fon: + 49 (0) 44 65 8 07 0  
fax: + 49 (0) 44 65 8 07 40

---

**7 Montagezubehör**  
**7 installation accessories**

Hier finden Sie das notwendige Zubehör zur Installation von Anlagen, wie z.B. Schellen und Rohrschlitten jeglicher Art oder Kalottenfüße. Auch Rohrendkappen unterschiedlichster Größe sind in dieser Produktgruppe hinterlegt. Weiterhin möchten wir Sie darauf hinweisen, dass wir natürlich auch Sonderschellen nach Ihren Wünschen anfertigen.

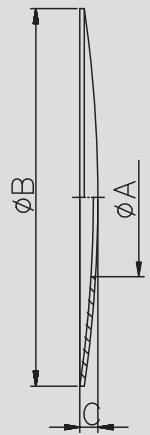


**Montagezubehör**  
 Installation accessories

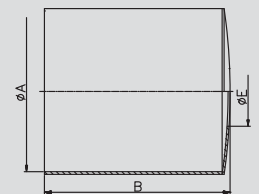
Here you will find the necessary accessories for the installation of plants, e.g. tube clamps and pipe holders slide-type of any kinds or spherical cap bases. End caps of pipes in different sizes are based in this product group as well. Furthermore we would like to add, that we can certainly manufacture individual pipe clamps according to your demand.

**7.01 Rohrkappen**
**7.01 pipe ends**
**Art.-Nr. 70100-**

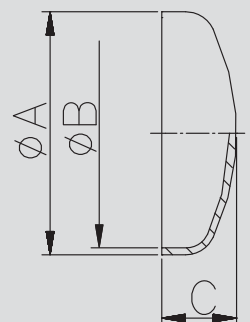
Art.-Nr. 70100-							AISI 304-1.4301			
DN	A	B	C	D	E	Gew.	Art.-Nr.	Preis	Art.-Nr.	Preis
mm	mm	mm	mm	mm	mm	kg	poliert	EUR	matt	EUR
25	28,5	125,0	8,0			0,180	-0251	9,20	-0252	8,60
32	34,5	125,0	8,0			0,120	-0321	9,20	-0322	8,60
40	40,5	125,0	8,0			0,170	-0401	9,35	-0402	8,75
50	52,5	125,0	6,0			0,110	-0501	9,65	-0502	9,00
65	70,5	125,0	6,0			0,130	-0651	9,55	-0652	9,20
80	85,5	180,0	10,0			0,145	-0801	22,85	-0802	22,00
100	104,5	180,0	10,0			0,270	-1001	23,20	-1002	22,35

**Rosette**
**rosette**

**Art.-Nr. 70200-**

Art.-Nr. 70200-							AISI 304-1.4301			
DN	A	B	C	D	E	Gew.	Art.-Nr.	Preis	Art.-Nr.	Preis
mm	mm	mm	mm	mm	mm	kg	poliert	EUR	matt	EUR
25	81,0	140,0				28,2	-0251	41,60	-0252	38,25
32	100,0	140,0				34,2	-0321	41,70	-0322	38,35
40	100,0	140,0				40,2	-0401	41,70	-0402	38,35
50	125,0	140,0				52,2	-0501	56,60	-0502	52,05
65	125,0	140,0				70,3	-0651	55,10	-0652	52,05
80	125,0	160,0				85,3	-0801	57,30	-0802	54,15
100	150,0	200,0				104,3	-1001	75,35	-1002	71,20

**Glocke**
**bell for welding**

**Art.-Nr. 7030-**

Art.-Nr. 7030-							AISI 304/304L-1.4301/1.4307				AISI 316L-1.4404			
DN	A	B	C	D	E	Gew.	Art.-Nr.	Preis	Art.-Nr.	Preis	Art.-Nr.	Preis	Art.-Nr.	Preis
mm	mm	mm	mm	mm	mm	kg	poliert	EUR	matt	EUR	poliert	EUR	matt	EUR
25	28,0	25,0	11,0			0,010	-00251	5,10	-00252	4,75	-00253	7,40	-00254	6,90
32	34,0	31,0	14,0			0,020	-00321	5,30	-00322	4,95	-00323	7,75	-00324	7,25
40	40,0	37,0	14,0			0,030	-00401	5,80	-00402	5,40	-00403	8,50	-00404	7,95
50	52,0	49,0	17,0			0,040	-00501	6,70	-00502	6,25	-00503	10,00	-00504	9,35
65	70,0	66,0	22,0			0,090	-00651	8,30	-00652	7,95	-00653	12,20	-00654	11,75
80	85,0	81,0	24,0			0,130	-00801	9,10	-00802	8,75	-00803	13,75	-00804	13,20
100	104,0	100,0	28,0			0,200	-01001	11,25	-01002	10,80	-01003	17,00	-01004	16,35
125	129,0	125,0	33,0			0,290	-01251	15,90	-01252	15,30	-01253	25,50	-01254	24,55
150	154,0	150,0	38,0			0,430	-01501	21,25	-01502	20,45	-01503	32,95	-01504	31,70
200	204,0	200,0	47,0			0,750	-02001	44,85	-02002	43,20	-02003	71,65	-02004	69,00
250	254,0	250,0	50,0			1,110	-02501	77,00	-02502	74,15	-02503	114,15	-02504	109,95
1"	25,4	22,9	12,0			0,010	-11001	6,40	-11002	6,15	-11003	9,30	-11004	8,90
1,5"	38,1	35,1	14,0			0,030	-11121	6,85	-11122	6,55	-11123	10,05	-11124	9,65
2"	50,8	47,8	15,0			0,040	-12001	6,80	-12002	6,65	-12003	10,10	-12004	9,90
2,5"	63,5	60,5	18,0			0,090	-12121	8,50	-12122	8,30	-12123	12,45	-12124	12,20
3"	76,1	72,1	20,0			0,130	-13001	9,30	-13002	9,10	-13003	13,95	-13004	13,65
4"	101,6	97,6	28,0			0,200	-14001	11,75	-14002	11,50	-14003	17,70	-14004	17,35

**Gewölbter Boden  
DIN/Zoll**
**convex bottom  
DIN/inch**


**7.02 Kompensator, Kalottenfuß**
**7.02 compensator, spherical cap base**

Kompensator DIN compensator DIN	Art.-Nr. 70400-							AISI 304/304L-1.4301/1.4307				AISI 316L-1.4404				
	DN	A	B	C	D	E	Gew.	Art.-Nr.	Preis	Art.-Nr.	Preis	Art.-Nr.	Preis	Art.-Nr.	Preis	
	mm	mm	mm	mm	mm	mm	kg	poliert	EUR	matt	EUR	poliert	EUR	matt	EUR	
	25	200,0	28,0	25,0			0,210	-0251	86,30	-0252	78,85	-0253	123,75	-0254	112,50	
	32	200,0	34,0	31,0			0,220	-0321	110,20	-0322	100,70	-0323	146,30	-0324	133,00	
	40	200,0	40,0	37,0			0,320	-0401	107,80	-0402	98,50	-0403	143,10	-0404	130,05	
	50	200,0	52,0	49,0			0,370	-0501	132,80	-0502	121,35	-0503	176,25	-0504	160,20	
	65	200,0	70,0	66,0			0,590	-0651	166,05	-0652	151,70	-0653	278,45	-0654	253,10	
	80	200,0	85,0	81,0			0,840	-0801	234,45	-0802	214,20	-0803	311,20	-0804	282,90	
	100	300,0	104,0	100,0			1,530	-1001	277,20	-1002	253,30	-1003	367,95	-1004	334,50	

Kalottenfuß kpl. mit Teller spherical cap base cpl.	Art.-Nr. 70501-							AISI 304-1.4301	
	DN	A	B	C	D	E	Gew.	Art.-Nr.	Preis
	mm	mm	mm	mm	mm	mm	kg	blank	EUR
	0,5"	100,0	29,0	G1/2"	35,0	120,0	0,780	-0121	35,90
	0,75"	100,0	32,0	G3/4"	38,0	120,0	0,940	-0341	38,65
	1"	120,0	39,5	G1"	45,0	120,0	1,360	-1001	46,75
	1,25"	150,0	49,5	G1.1/4"	55,0	160,0	3,050	-1141	77,15
	1,5"	150,0	57,0	G1.1/2"	60,0	160,0	3,860	-1121	84,45

G: Rohrgewinde ISO 228-1 G: pipe thread ISO 228-1

Kalottenfuß spherical cap base	Art.-Nr. 70601-							AISI 304-1.4301	
	DN	A	B	C	D	E	Gew.	Art.-Nr.	Preis
	mm	mm	mm	mm	mm	mm	kg	blank	EUR
	0,5"	100,0		G1/2"			0,230	-0121	10,00
	0,75"	100,0		G3/4"			0,380	-0341	11,25
	1"	120,0		G1"			0,720	-1001	13,85
	1,25"	150,0		G1.1/4"			1,470	-1141	23,35
	1,5"	150,0		G1.1/2"			1,900	-1121	23,55

G: Rohrgewinde ISO 228-1 G: pipe thread ISO 228-1

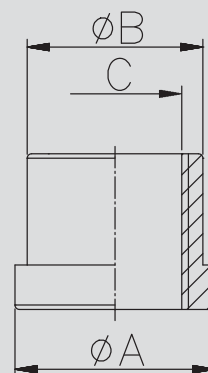
**7.03 Zubehör Kalottenfuß**
**7.03 accessories spherical cap base**

Art.-Nr. 70701-						
DN	A	B	C	D	E	Gew.
mm	mm	mm	mm	mm	mm	kg
0,5"	35,0	29,0	G1/2"			0,080
0,75"	38,0	32,0	G3/4"			0,080
1"	45,0	39,5	G1"			0,130
1,25"	55,0	49,5	G1.1/4"			0,210
1,5"	65,0	57,0	G1.1/2"			0,420

AISI 304-1.4301		
Art.-Nr.	Preis	
blank	EUR	
-0121	8,00	
-0341	8,70	
-1001	10,40	
-1141	13,85	
-1121	15,50	

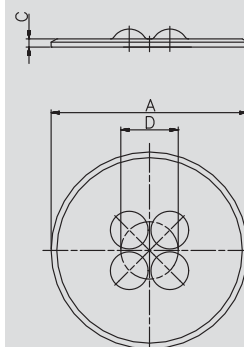
G: Rohrgewinde ISO 228-1

G: pipe thread ISO 228-1

**Kalottenmuffe**  
**spherical cap socket**


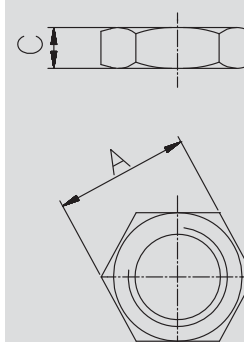
Art.-Nr. 70801-						
DN	A	B	C	D	E	Gew.
mm	mm	mm	mm	mm	mm	kg
1"	120,0	5,0		35,0		0,430
1,5"	160,0	8,0		50,0		1,270

AISI 304-1.4301		
Art.-Nr.	Preis	
blank	EUR	
-1001	13,95	
-1121	25,20	

**Kalottenteller**  
**spherical cap disk**


Art.-Nr. 70901-						
DN	A	B	C	D	E	Gew.
mm	mm	mm	mm	mm	mm	kg
0,5"	32,0		8,0			0,030
0,75"	36,0		9,0			0,040
1"	46,0		10,0			0,070
1,25"	55,0		11,0			0,100
1,5"	60,0		12,0			0,120

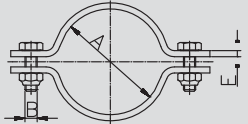
AISI 316Ti-1.4571		
Art.-Nr.	Preis	
blank	EUR	
-0125	3,90	
-0345	4,75	
-1005	8,55	
-1145	14,75	
-1125	20,15	

**Kontermutter für Kalottenfuß**  
**lock nut**


**7.04 Rohrschelle DIN**
**7.04 pipe clamp DIN**

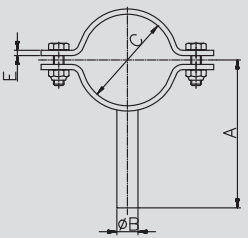
Rohrschelle DIN ohne Schaft  pipe clamp DIN without shank	Art.-Nr. 73400-							AISI 304-1.4301			
	DN	A	B	C	D	E	Gew.	Art.-Nr. poliert	Preis EUR	Art.-Nr. matt	Preis EUR
		mm	mm	mm	mm	mm	kg				
	10	12,0	M6x20			20x2	0,030	-0101	3,85	-0102	4,05
	15	18,0	M6x20			20x2	0,040	-0151	3,85	-0152	4,05
	20	22,0	M6x20			20x3	0,060	-0201	3,85	-0202	4,05
	25	28,0	M6x20			20x3	0,060	-0251	3,20	-0252	3,35
	32	34,0	M6x20			20x3	0,080	-0321	3,50	-0322	3,65
	40	40,0	M6x20			20x3	0,080	-0401	3,50	-0402	3,65
	50	52,0	M6x20			20x3	0,100	-0501	4,15	-0502	4,25
	65	70,0	M6x20			20x3	0,130	-0651	4,35	-0652	4,45
	80	85,0	M6x20			25x3	0,190	-0801	5,90	-0802	6,05
	100	104,0	M6x20			25x3	0,240	-1001	6,70	-1002	6,85
	125	129,0	M8x27			30x3	0,370	-1251	20,95	-1252	21,40
	150	154,0	M8x27			30x3	0,420	-1501	25,80	-1502	26,35
	200	204,0	M10x40			40x4	1,020	-2001	41,40	-2002	42,25
	250	254,0	M10x40			40x4	1,300	-2501	59,05	-2502	60,25

E: Flachmaterial E: strip-steel



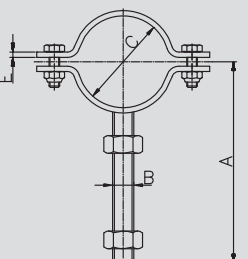
Rohrschelle DIN mit Schaft  pipe clamp DIN with shank	Art.-Nr. 73500-							AISI 304-1.4301			
	DN	A	B	C	D	E	Gew.	Art.-Nr. poliert	Preis EUR	Art.-Nr. matt	Preis EUR
		mm	mm	mm	mm	mm	kg				
	10	62,5	8,0	12,0		20x2	0,060	-0101	5,70	-0102	5,95
	15	65,5	8,0	18,0		20x2	0,070	-0151	5,70	-0152	5,95
	20	68,5	8,0	22,0		20x3	0,090	-0201	5,70	-0202	5,95
	25	71,5	10,0	28,0		20x3	0,110	-0251	5,55	-0252	5,80
	32	74,5	10,0	34,0		20x3	0,120	-0321	5,75	-0322	6,00
	40	77,5	10,0	40,0		20x3	0,130	-0401	5,75	-0402	6,00
	50	83,5	12,0	52,0		20x3	0,160	-0501	6,40	-0502	6,55
	65	92,5	12,0	70,0		20x3	0,190	-0651	7,15	-0652	7,30
	80	100,0	12,0	85,0		25x3	0,250	-0801	8,65	-0802	8,85
	100	109,5	12,0	104,0		25x3	0,290	-1001	9,50	-1002	9,70
	125	140,5	16,0	129,0		30x3	0,510	-1251	28,10	-1252	28,70
	150	179,5	16,0	154,0		30x3	1,035	-1501	37,30	-1502	38,05
	200	226,0	20,0	204,0		40x4	1,320	-2001	58,05	-2002	59,25
	250	251,0	20,0	254,0		40x4	1,560	-2501	85,90	-2502	87,65

E: Flachmaterial E: strip-steel



Rohrschelle DIN mit Gewindeschaft  pipe clamp DIN with threaded shank	Art.-Nr. 73600-							AISI 304-1.4301			
	DN	A	B	C	D	E	Gew.	Art.-Nr. poliert	Preis EUR	Art.-Nr. matt	Preis EUR
		mm	mm	mm	mm	mm	kg				
	10	92,5	M8	12,0		20x2	0,040	-0101	7,65	-0102	8,00
	15	95,5	M8	18,0		20x2	0,065	-0151	7,65	-0152	8,00
	20	98,5	M8	22,0		20x3	0,080	-0201	7,65	-0202	8,00
	25	101,5	M10	28,0		20x3	0,100	-0251	6,65	-0252	6,95
	32	104,5	M10	34,0		20x3	0,110	-0321	6,85	-0322	7,15
	40	107,5	M10	40,0		20x3	0,115	-0401	7,05	-0402	7,35
	50	113,5	M12	52,0		20x3	0,130	-0501	7,80	-0502	8,00
	65	122,5	M12	70,0		20x3	0,160	-0651	8,75	-0652	8,95
	80	130,0	M12	85,0		25x3	0,280	-0801	12,10	-0802	12,35
	100	139,5	M12	104,0		25x3	0,320	-1001	13,15	-1002	13,45
	125	167,0	M16	129,0		30x3	0,480	-1251	39,75	-1252	40,55
	150	200,0	M16	154,0		30x3	1,035	-1501	53,65	-1502	54,75
	200	246,0	M20	204,0		40x4	1,480	-2001	78,10	-2002	79,70

E: Flachmaterial E: strip-steel



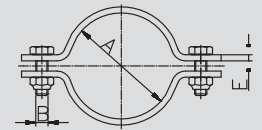


**7.05 Rohrschelle Zoll**
**7.05 pipe clamp inch**
**Art.-Nr. 72401-**

DN	A	B	C	D	E	Gew.
mm	mm	mm	mm	mm	mm	kg
1"	25,4	M6x20			20x3	0,050
1,25"	31,8	M6x20			20x3	0,065
1,5"	38,1	M6x20			20x3	0,070
2"	50,8	M6x20			20x3	0,080
2,5"	63,5	M6x20			20x3	0,090
3"	76,1	M6x20			25x3	0,150
4"	101,6	M6x20			25x3	0,225

**AISI 304-1.4301**

Art.-Nr.	Preis	Art.-Nr.	Preis
poliert	EUR	matt	EUR
-1001	3,30	-1002	3,45
-1141	3,65	-1142	3,80
-1121	3,80	-1122	4,00
-2001	4,50	-2002	4,60
-2121	4,85	-2122	4,95
-3001	6,60	-3002	6,75
-4001	7,45	-4002	7,60

**Rohrschelle Zoll ohne Schaft**
**pipe clamp inch without shank**


E: Flachmaterial

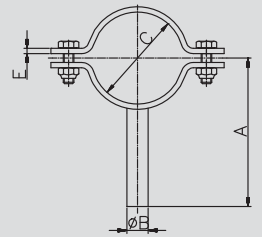
E: strip-steel

**Art.-Nr. 72501-**

DN	A	B	C	D	E	Gew.
mm	mm	mm	mm	mm	mm	kg
1"	70,5	10,0	25,4		20x3	0,095
1,25"	73,5	10,0	31,8		20x3	0,100
1,5"	76,5	10,0	38,1		20x3	0,110
2"	83,0	12,0	50,8		20x3	0,125
2,5"	89,5	12,0	63,5		20x3	0,150
3"	96,0	12,0	76,1		25x3	0,270
4"	108,5	12,0	101,6		25x3	0,300

**AISI 304-1.4301**

Art.-Nr.	Preis	Art.-Nr.	Preis
poliert	EUR	matt	EUR
-1001	5,75	-1002	6,00
-1141	6,00	-1142	6,25
-1121	6,25	-1122	6,50
-2001	6,95	-2002	7,10
-2121	7,85	-2122	8,05
-3001	9,60	-3002	9,80
-4001	10,50	-4002	10,75

**Rohrschelle Zoll mit Schaft**
**pipe clamp inch with shank**


E: Flachmaterial

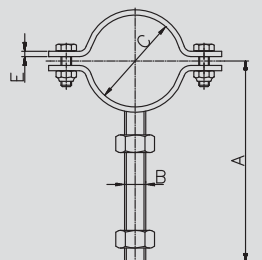
E: strip-steel

**Art.-Nr. 72601-**

DN	A	B	C	D	E	Gew.
mm	mm	mm	mm	mm	mm	kg
1"	100,5	M10	25,4		20x3	0,100
1,25"	103,5	M10	31,8		20x3	0,110
1,5"	106,5	M10	38,1		20x3	0,115
2"	113,0	M12	50,8		20x3	0,130
2,5"	119,5	M12	63,5		20x3	0,160
3"	126,0	M12	76,1		25x3	0,280
4"	138,5	M12	101,6		25x3	0,320

**AISI 304-1.4301**

Art.-Nr.	Preis	Art.-Nr.	Preis
poliert	EUR	matt	EUR
-1001	6,80	-1002	7,10
-1141	7,00	-1142	7,30
-1121	7,20	-1122	7,50
-2001	8,00	-2002	8,20
-2121	8,95	-2122	9,15
-3001	12,30	-3002	12,55
-4001	13,40	-4002	13,70

**Rohrschelle Zoll mit Gewindeschaft**
**pipe clamp inch with threaded shank**


E: Flachmaterial

E: strip-steel

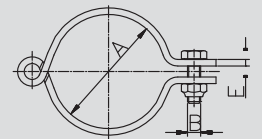


**7.07 Rohrschelle DIN klappbar**
**7.07 pipe clamp DIN hinged**
**Art.-Nr. 71400-**

DN	A	B	C	D	E	Gew.
mm	mm	mm	mm	mm	mm	kg
20	22,0	M8			25x2	0,060
25	28,0	M8			25x2	0,070
32	34,0	M8			25x2	0,070
40	40,0	M8			25x2	0,080
50	52,0	M10			30x3	0,190
65	70,0	M10			30x3	0,230
80	85,0	M10			30x3	0,260
100	104,0	M10			30x3	0,310

**AISI 304-1.4301**

Art.-Nr.	Preis	Art.-Nr.	Preis
poliert	EUR	matt	EUR
-0201	14,40	-0202	14,95
-0251	13,95	-0252	14,50
-0321	14,85	-0322	15,40
-0401	15,75	-0402	16,35
-0501	21,10	-0502	21,45
-0651	23,60	-0652	23,95
-0801	26,95	-0802	27,35
-1001	27,65	-1002	28,05

**Rohrschelle DIN  
ohne Schaft  
- klappbar**
**pipe clamp DIN  
without shank  
- hinged**


E: Flachmaterial

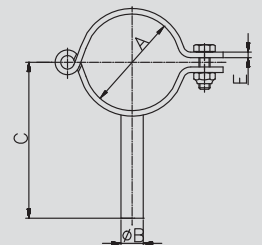
E: strip-steel

**Art.-Nr. 71500-**

DN	A	B	C	D	E	Gew.
mm	mm	mm	mm	mm	mm	kg
20	22,0	8,0	68,5		25x2	0,080
25	28,0	10,0	71,5		25x2	0,100
32	34,0	10,0	74,5		25x2	0,100
40	40,0	10,0	77,5		25x2	0,120
50	52,0	12,0	83,5		30x3	0,220
65	70,0	12,0	92,5		30x3	0,280
80	85,0	12,0	100,0		30x3	0,340
100	104,0	12,0	109,5		30x3	0,390

**AISI 304-1.4301**

Art.-Nr.	Preis	Art.-Nr.	Preis
poliert	EUR	matt	EUR
-0201	23,60	-0202	24,30
-0251	22,85	-0252	23,55
-0321	24,10	-0322	24,80
-0401	25,20	-0402	25,95
-0501	28,10	-0502	28,55
-0651	30,60	-0652	31,05
-0801	33,95	-0802	34,45
-1001	34,75	-1002	35,25

**Rohrschelle DIN  
mit Schaft  
- klappbar**
**pipe clamp DIN  
with shank - hinged**


E: Flachmaterial

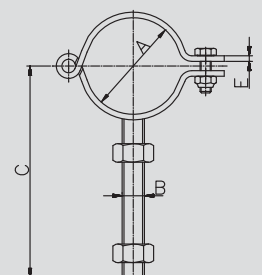
E: strip-steel

**Art.-Nr. 71600-**

DN	A	B	C	D	E	Gew.
mm	mm	mm	mm	mm	mm	kg
20	22,0	M8	98,5		25x2	0,080
25	28,0	M10	101,5		25x2	0,100
32	34,0	M10	104,5		25x2	0,100
40	40,0	M10	107,5		25x2	0,120
50	52,0	M12	113,5		30x3	0,220
65	70,0	M12	122,5		30x3	0,280
80	85,0	M12	130,0		30x3	0,340
100	104,0	M12	139,5		30x3	0,390

**AISI 304-1.4301**

Art.-Nr.	Preis	Art.-Nr.	Preis
poliert	EUR	matt	EUR
-0201	26,55	-0202	27,35
-0251	25,90	-0252	26,65
-0321	27,40	-0322	28,20
-0401	28,80	-0402	29,65
-0501	30,70	-0502	31,15
-0651	33,95	-0652	34,45
-0801	38,30	-0802	38,85
-1001	41,30	-1002	41,90

**Rohrschelle DIN  
mit Gewindegenschaft  
- klappbar**
**pipe clamp DIN  
with threaded shank  
- hinged**


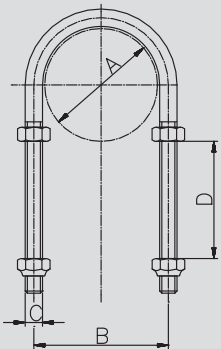
E: Flachmaterial

E: strip-steel

**7.08 Rohrspannbügel**
**7.08 pipe support**

Rohrspannbügel kpl.  
DIN  
Standard (54 mm)

pipe support cpl. DIN  
standard (54 mm)


**Art.-Nr. 73700-**

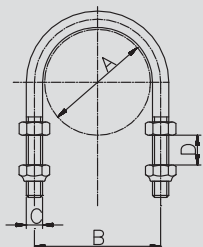
DN	A	B	C	D	E	Gew.
mm	mm	mm	mm	mm	mm	kg
10	12,0	20,0	M6	54,0		0,046
15	18,0	26,0	M6	54,0		0,046
20	22,0	30,0	M6	54,0		0,046
25	28,0	36,0	M6	54,0		0,048
32	34,0	42,0	M6	54,0		0,048
40	40,0	50,0	M8	54,0		0,095
50	52,0	62,0	M8	54,0		0,095
65	70,0	80,0	M8	54,0		0,130
80	85,0	97,0	M10	54,0		0,140
100	104,0	116,0	M10	54,0		0,245
125	129,0	141,0	M10	54,0		0,230
150	154,0	168,0	M12	54,0		0,230

AISI 304-1.4301

Art.-Nr.	Preis	Art.-Nr.	Preis
poliert	EUR	matt	EUR
-0101	(+)	-0102	(+)
-0151	(+)	-0152	(+)
-0201	(+)	-0202	(+)
-0251	5,95	-0252	5,95
-0321	6,35	-0322	6,35
-0401	7,40	-0402	7,40
-0501	8,00	-0502	8,00
-0651	8,65	-0652	8,65
-0801	13,40	-0802	13,40
-1001	16,90	-1002	16,90
-1251	17,75	-1252	17,75
-1501	28,65	-1502	28,65

Rohrspannbügel kpl.  
DIN  
kurz (8 mm)

pipe support cpl. DIN  
short (8 mm)


**Art.-Nr. 73710-**

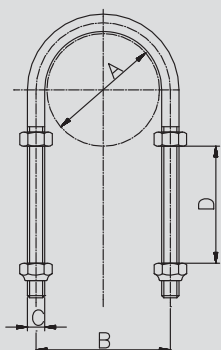
DN	A	B	C	D	E	Gew.
mm	mm	mm	mm	mm	mm	kg
10	12,0	20,0	M6	8,0		0,020
15	18,0	26,0	M6	8,0		0,020
20	22,0	30,0	M6	8,0		0,020
25	28,0	36,0	M6	8,0		0,020
32	34,0	42,0	M6	8,0		0,030
40	40,0	50,0	M8	8,0		0,070
50	52,0	62,0	M8	8,0		0,080
65	70,0	80,0	M8	8,0		0,100
80	85,0	97,0	M10	8,0		0,190
100	104,0	116,0	M10	8,0		0,220
125	129,0	141,0	M10	8,0		0,230
150	154,0	168,0	M12	8,0		0,240

AISI 304-1.4301

Art.-Nr.	Preis	Art.-Nr.	Preis
poliert	EUR	matt	EUR
-0101	(+)	-0102	(+)
-0151	(+)	-0152	(+)
-0201	(+)	-0202	(+)
-0251	5,85	-0252	5,85
-0321	6,30	-0322	6,30
-0401	7,05	-0402	7,05
-0501	7,50	-0502	7,50
-0651	8,15	-0652	8,15
-0801	12,00	-0802	12,00
-1001	15,30	-1002	15,30
-1251	17,65	-1252	17,65
-1501	25,45	-1502	25,45

Rohrspannbügel kpl.  
DIN  
lang (100 mm)

pipe support cpl. DIN  
long (100 mm)


**Art.-Nr. 73720-**

DN	A	B	C	D	E	Gew.
mm	mm	mm	mm	mm	mm	kg
10	12,0	20,0	M6	100,0		0,055
15	18,0	26,0	M6	100,0		0,055
20	22,0	30,0	M6	100,0		0,055
25	28,0	36,0	M6	100,0		0,065
32	34,0	42,0	M6	100,0		0,065
40	40,0	50,0	M8	100,0		0,110
50	52,0	62,0	M8	100,0		0,110
65	70,0	80,0	M8	100,0		0,145
80	85,0	97,0	M10	100,0		0,155
100	104,0	116,0	M10	100,0		0,265
125	129,0	141,0	M10	100,0		0,250
150	154,0	168,0	M12	100,0		0,260

AISI 304-1.4301

Art.-Nr.	Preis	Art.-Nr.	Preis
poliert	EUR	matt	EUR
-0101	(+)	-0102	(+)
-0151	(+)	-0152	(+)
-0201	(+)	-0202	(+)
-0251	6,65	-0252	6,65
-0321	7,40	-0322	7,40
-0401	8,35	-0402	8,35
-0501	9,10	-0502	9,10
-0651	10,15	-0652	10,15
-0801	15,60	-0802	15,60
-1001	19,40	-1002	19,40
-1251	22,45	-1252	22,45
-1501	29,65	-1502	29,65

(+) Preis auf Anfrage

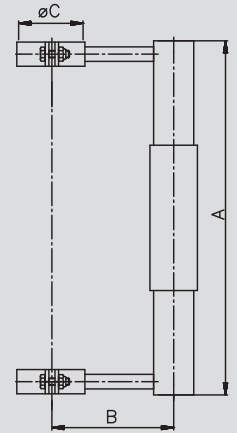
(+) price on inquiry

**7.09 Rohrschlitten**
**7.09 pipe holder slide-type**
**Art.-Nr. 73300-**

DN	A	B	C	D	E	Gew.
mm	mm	mm	mm	mm	mm	kg
25	200,0	87,0	28,0			0,740
32	200,0	90,0	34,0			0,750
40	200,0	93,0	40,0			0,780
50	200,0	99,0	52,0			0,820
65	200,0	108,0	70,0			0,900
80	200,0	115,0	85,0			1,000
100	200,0	125,0	104,0			1,100

## AISI 304-1.4301

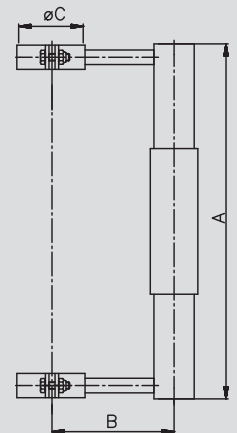
Art.-Nr.	Preis	Art.-Nr.	Preis
poliert	EUR	matt	EUR
-0251	(+)	-0252	(+)
-0321	(+)	-0322	(+)
-0401	(+)	-0402	(+)
-0501	(+)	-0502	(+)
-0651	(+)	-0652	(+)
-0801	(+)	-0802	(+)
-1001	(+)	-1002	(+)

**Rohrschlitten DIN**
**pipe holder slide-type DIN**

**Art.-Nr. 73301-**

DN	A	B	C	D	E	Gew.
mm	mm	mm	mm	mm	mm	kg
1"	200,0	87,0	25,4			0,740
1,5"	200,0	93,0	38,1			0,750
2"	200,0	99,0	50,8			0,820
2,5"	200,0	108,0	63,5			0,900
3"	200,0	115,0	76,1			1,000
4"	200,0	125,0	101,6			1,100

## AISI 304-1.4301

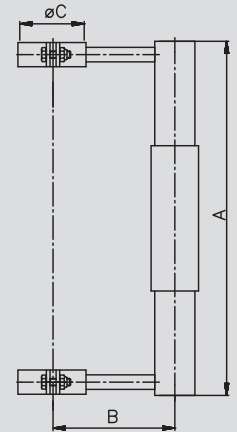
Art.-Nr.	Preis	Art.-Nr.	Preis
poliert	EUR	matt	EUR
-1001	(+)	-1002	(+)
-1121	(+)	-1122	(+)
-2001	(+)	-2002	(+)
-2121	(+)	-2122	(+)
-3001	(+)	-3002	(+)
-4001	(+)	-4002	(+)

**Rohrschlitten Zoll**
**pipe holder slide-type inch**

**Art.-Nr. 73308-**

DN	A	B	C	D	E	Gew.
mm	mm	mm	mm	mm	mm	kg
33,7	200,0	87,0	33,7			0,740
42,4	200,0	90,0	42,4			0,750
48,3	200,0	93,0	48,3			0,780
60,3	200,0	99,0	60,3			0,820
76,1	200,0	108,0	76,1			0,900
88,9	200,0	115,0	88,9			1,000
114,3	200,0	125,0	114,3			1,100

## AISI 304-1.4301

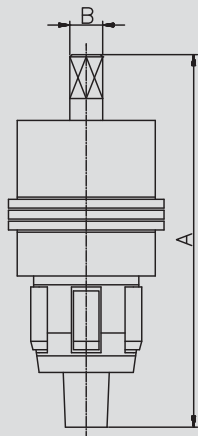
Art.-Nr.	Preis	Art.-Nr.	Preis
poliert	EUR	matt	EUR
-0251	(+)	-0252	(+)
-0321	(+)	-0322	(+)
-0401	(+)	-0402	(+)
-0501	(+)	-0502	(+)
-0651	(+)	-0652	(+)
-0801	(+)	-0802	(+)
-1001	(+)	-1002	(+)

**Rohrschlitten ISO**
**pipe holder slide-type ISO**


(+) Preis auf Anfrage

(+) price on inquiry

**7.10 Werkzeug**
**7.10 tool**
**Rohrwalze DIN/Zoll**
**Art.-Nr. 7380-**

 pipe expander  
 DIN/inch


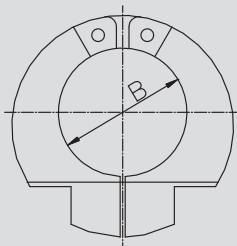
DN	A	B	C	D	E	Gew.	Art.-Nr.	Preis
	mm	mm	mm	mm	mm	kg		EUR
10	118,0	8,0				0,310	-00100	195,60
15	129,0	8,0				0,330	-00150	195,60
20	140,0	8,0				0,360	-00200	195,60
25	159,0	12,0				0,670	-00250	250,50
32	171,0	12,0				1,030	-00320	250,50
40	176,0	14,0				1,430	-00400	264,20
50	180,0	14,0				2,280	-00500	301,95
65	205,0	16,0				4,250	-00650	418,60
80	238,0	22,0				7,900	-00800	504,35
100	240,0	22,0				0,500	-01000	713,65
1"	159,0	12,0				0,670	-11000	250,50
1,5"	176,0	14,0				1,430	-11120	264,20
2"	180,0	14,0				2,280	-12000	301,95
2,5"	205,0	16,0				4,250	-12120	418,60
3"	238,0	22,0				7,900	-13000	452,90
4"	240,0	22,0				10,500	-14000	713,65

Knarre separat lieferbar

ratchet could be delivered separately

**Rohrsägewerkzeug**  
 DIN/Zoll

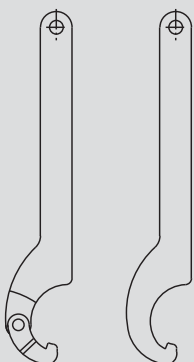
**Art.-Nr. 7400-**

 pipe sawing tool  
 DIN/inch


DN	A	B	C	D	E	Gew.	Art.-Nr.	Preis
	mm	mm	mm	mm	mm	kg		EUR
10		12,0				0,570	-00100	113,20
15		18,0				0,550	-00150	113,20
20		22,0				0,530	-00200	113,20
25		28,0				0,710	-00250	114,30
32		34,0				0,640	-00320	114,30
40		40,0				0,830	-00400	123,20
50		52,0				0,980	-00500	133,75
65		70,0				1,940	-00650	201,55
80		85,0				2,150	-00800	283,40
100		104,0				2,690	-01000	336,10
1"		25,4				0,750	-11000	114,10
1,5"		38,1				0,830	-11120	118,40
2"		50,8				0,980	-12000	127,85
2,5"		63,5				1,940	-12120	201,55
3"		76,2				2,150	-13000	283,40
4"		101,6				2,690	-14000	336,45

**Hakenschlüssel**
**Art.-Nr. 750-**

spanner



AISI 304-1.4301/stahlvernicket*							Art.-Nr.	Preis
DN	A	B	C	D	E	Gew.		EUR
	mm	mm	mm	mm	mm	kg		
10-20 mit Gelenk*					Typ35/60	0,090	-000100020	24,40
25-40 mit Gelenk*					Typ60/90	0,290	-000250040	27,55
50-100 mit Gelenk*					Typ90/155	0,430	-000500100	33,75
125-150 mit Gelenk*					Typ155/230	0,580	-001250150	60,00
25-50 starre Ausführung aus Edelstahl						0,296	-100251050	25,90
65-100 starre Ausführung aus Edelstahl						0,435	-100651100	39,70



**Armaturen GmbH**

fon + 49 (0) 44 65 8 07 0  
fax + 49 (0) 44 65 8 07 40



# Armaturen GmbH

**Armaturen, Rohre, Sonderteile** aus Edelstahl  
fittings, pipes, special parts of stainless steel

Industriestraße 24 - 26 · D-26446 Friedeburg  
fon + 49 (0) 44 65 8 07 0 · fax + 49 (0) 44 65 8 07 40  
mail: [info@ms-armaturen.de](mailto:info@ms-armaturen.de) · <http://www.ms-armaturen.de>